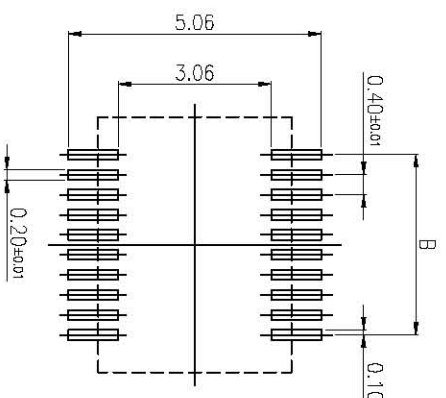
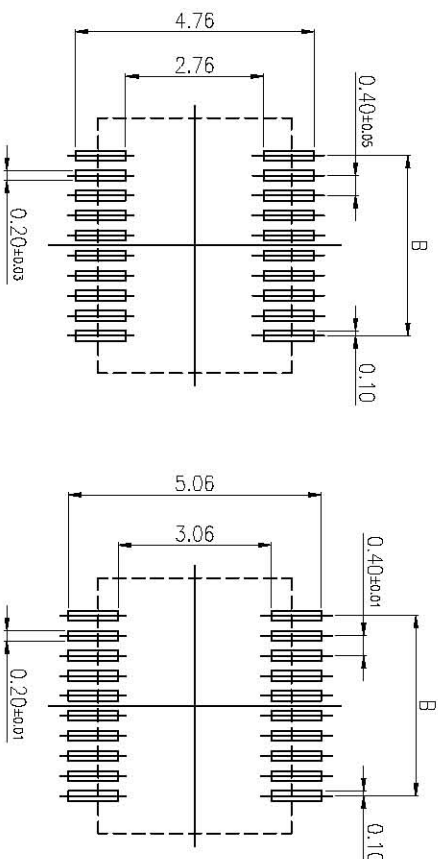
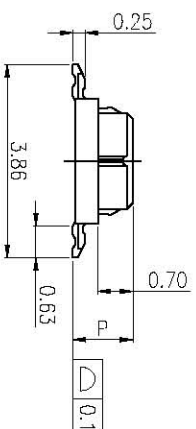
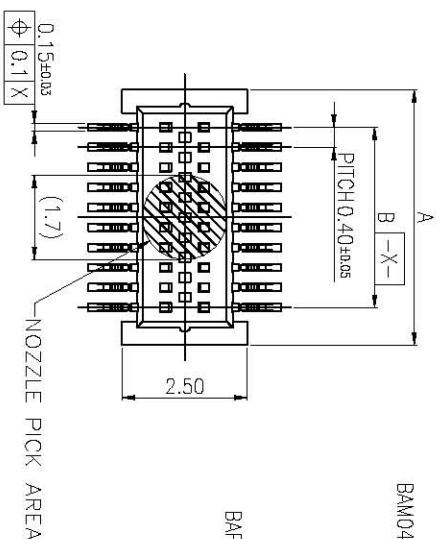


MATING SECTION
SCALE 15:1



FEMALE		PRODUCT NO.
DIM. P	PRODUCT NO.	DIM. H
1.20	BAM04-XX15X-0502	1.5mm
1.70	BAM04-XX20X-0502	2.0mm

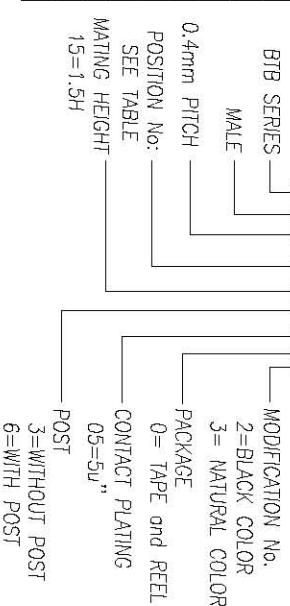
15.6	17.1	80	BAM04-80153-0502	
13.6	15.1	70	BAM04-70153-0502	
11.6	13.1	60	BAM04-60153-0502	◎
9.6	11.1	50	BAM04-50153-0502	◎
8.4	9.9	44	BAM04-44153-0502	◎
7.6	9.1	40	BAM04-40153-0502	◎
6.4	7.9	34	BAM04-34153-0502	
6.0	7.5	32	BAM04-32153-0502	
5.6	7.1	30	BAM04-30153-0502	◎
4.8	6.3	26	BAM04-26153-0502	◎
4.4	5.9	24	BAM04-24153-0502	◎
4.0	5.5	22	BAM04-22153-0502	◎
3.6	5.1	20	BAM04-20153-0502	◎
2.8	4.3	16	BAM04-16153-0502	◎
1.6	3.1	10	BAM04-10153-0502	
B	A	POS.	Product No:	Available

NOTES:

- 1.MATERIAL:
1-1. HOUSING :THERMOPLASTIC UL 94 V-0.
1-2. CONTACTS :COPPER ALLOY
- 2.FINISH CONTACT:
1-1. CONTACT AREA PLATING:HARD GOLD
1-2. BASE PLATING:NICKEL THICKNESS AT 50u" MIN
- 3.SPECIFICATION:
3-1.Electrical-
Voltage Rating :50V AC
Current Rating :0.5A/Contact
Contact Resistance :50mΩ Max Initial, After
Condition ΔR=30mΩ Max
Insulation Resistance :100MΩ Min
Dielectric Withstanding Voltage :150V AC r.m.s.
- 3-2.Mechanical-
Mating Force :100g Max/Contact
Unmating Force :6g Min/Contact
Durability :50 Times for Life Cycle
- 3-3.Environmental Temperature-
Operating : -40°C~+85°C

4.PRODUCT No:

BAM04-XX153-0502

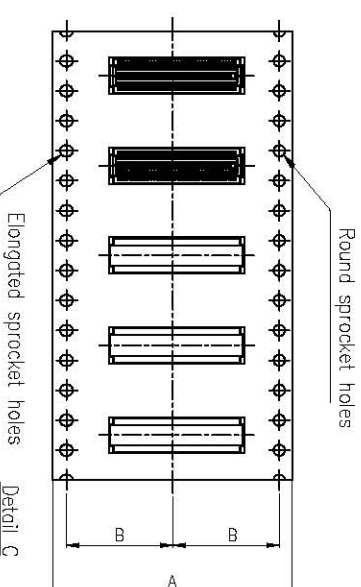
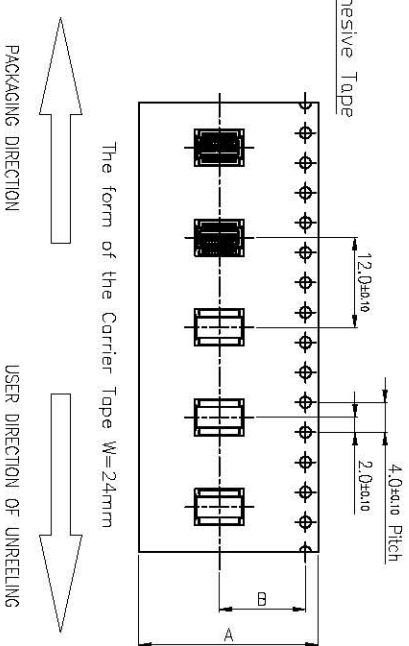
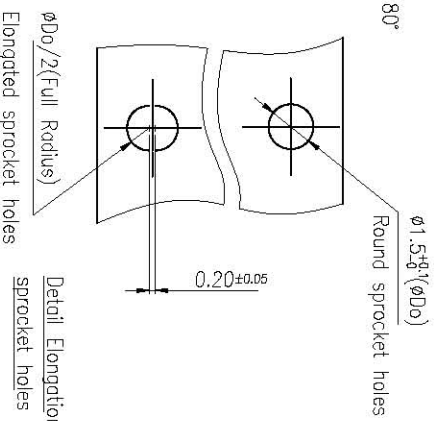
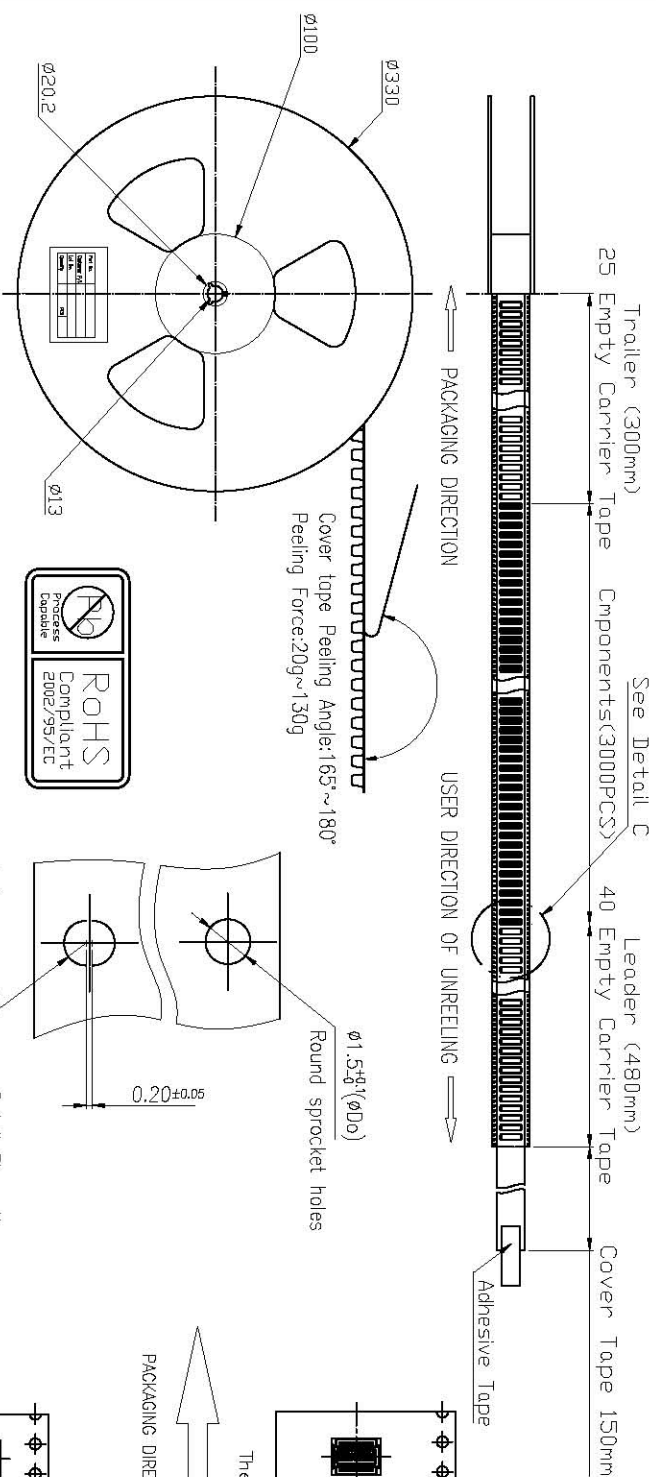


LGN® Shenzhen linkonn
Electronics Co.,Ltd.

DIMENSION IN mm [inch]		TOLERANCE UNLESS OTHERWISE SPECIFIED	
XX± 0.35	XX± 5.0"	XX± 0.25	XX± 3.0"
XX± 0.15	XX± 1.0"	XX± 0.15	XX± 1.0"
APR. 2008.12.05	JASON	CHK. 2008.12.05	JAYE
DR. 2008.12.05	NICK	PROJ. 2008.12.05	NICK
TITLE: 0.4mm PITCH BOARD TO BOARD MALE		DWG NO. BAM04-XX153-0502	
MATING HEIGHT 1.5mm		CUSTOMER DRAWING	
SIZE A3		SCALE 10:1	
SHEET 1		REV. K	

REV.	QTY	ECN. NO.	APR.	DATE
K	2	RO-EN-08-889	JASON	2008.12.05

REV.	QTY	ECN. NO.	APP.	DATE
K	2	RD-EN-08-889	JASON	2008.12.05



The form of the Carrier Tape W=32mm

LGN® Shenzhen Linkconn Electronics Co., Ltd.

POS.	Product No.	DIM. A	DIM. B	QTY/REEL	REEL/CARTON	Kg/CARTON	QTY/CARTON	CARTON SIZE
80	BAM04-8015X-0502	32.0	14.2	2000	7	6.66	14000	
70	BAM04-7015X-0502					6.42		
60	BAM04-6015X-0502					8.31		
50	BAM04-5015X-0502					7.96		
44	BAM04-4415X-0502					7.73		
40	BAM04-4015X-0502					7.61		
34	BAM04-3415X-0502					7.40		
32	BAM04-3215X-0502					7.33		
30	BAM04-3015X-0502					7.26		
26	BAM04-2615X-0502	24.0	11.5	2000	10	7.12	20000	360X360X35
24	BAM04-2415X-0502					7.04		
22	BAM04-2215X-0502					6.99		
20	BAM04-2015X-0502					6.92		
16	BAF04-1615X-0502					6.78		
10	BAM04-1015X-0502					6.57		

DIMENSION IN mm [inch]		TOLERANCE UNLESS OTHERWISE SPECIFIED	
$X \pm 0.35$	$X \pm 5.0"$	APR	JASON 2008.12.05
$.XX \pm 0.25$	$.X \pm 3.0"$	CHK	JOVE 2008.12.05
$.XXX \pm 0.15$	$.XX \pm 1.0"$	DRA	NICK 2008.12.05
TITLE: 0.4mm PITCH BOARD TO BOARD MALE		DWG NO.	BAM04-XX15X-0502
PROJ.		SCALE	NONE
SHEET		2	2
REV.		K	